



HASCOMBE HOUSE, 73 THE STREET, ASHTEAD, KT21 1AA
£169,950 LEASEHOLD



HASCOMBE HOUSE, 73 THE STREET ASHTEAD, KT21 1AA

**A Spacious First Floor Studio Apartment
Located In The Heart Of The Village
Beautifully Presented Throughout
Allocated Parking Space**

**119 Year Lease Unexpired • Entrance Hall
Double Aspect Living Room/Bedroom
Full Length Wide Windows
Modern Fitted Kitchen With Built In Appliances
Modern Shower Room • New Fitted Carpets
Telephone Entry System
Immediate Vacant Possession**



AN ATTRACTIVE PURPOSE BUILT FIRST FLOOR studio apartment constructed around 2010 and situated in an excellent central location in the heart of the village within a stone's throw of Marks & Spencers and independent retailers and restaurants. The apartment is beautifully presented throughout having just been decorated and features newly fitted carpets and a bright double aspect living room/bedroom with two wide double glazed full length windows and juliet balconies plus modern fitted kitchen which includes built in appliances and breakfast bar. The apartment benefits further from a long lease, security entry system, allocated parking space and no ongoing chain.

GROUND FLOOR

COMMUNAL ENTRANCE

Covered communal entrance porch, recessed ceiling lights, secure entry system leading to lobby with stairs to first floor landing.

FIRST FLOOR

ENTRANCE HALL

front door with spyhole, telephone intercom system, built in storage cupboard housing consumer unit, smoke detector, door to:

MODERN SHOWER ROOM

Modern white suite comprising corner shower cubicle, sliding glazed shower screen, independent Triton shower unit, wash hand basin, mixer tap, cupboard under, low level w.c., chrome towel rail, ceramic tiled floor, recessed ceiling lights, extractor fan, fully tiled walls, fitted mirror with feature lights.

LIVING ROOM/BEDROOM/KITCHEN 18'2" × 9'8" (5.54m × 2.95m)

A light and spacious double aspect room with two wide double glazed full length windows with juliet balconies, two electric wall heaters, tall fitted storage cupboard, opening to recess:

FITTED KITCHEN

Fitted with an excellent range of wall and floor units with chrome bar handles, contrasting light wood effect work surfaces, inset single drainer stainless steel sink unit, mixer tap, built in Indesit electric oven & grill, inset 4 ring ceramic hob, stainless steel extractor/chimney hood above, integrated fridge/freezer, integrated washing machine, part tiled walls, ceramic tiled floor, recess ceiling lights.

OUTSIDE

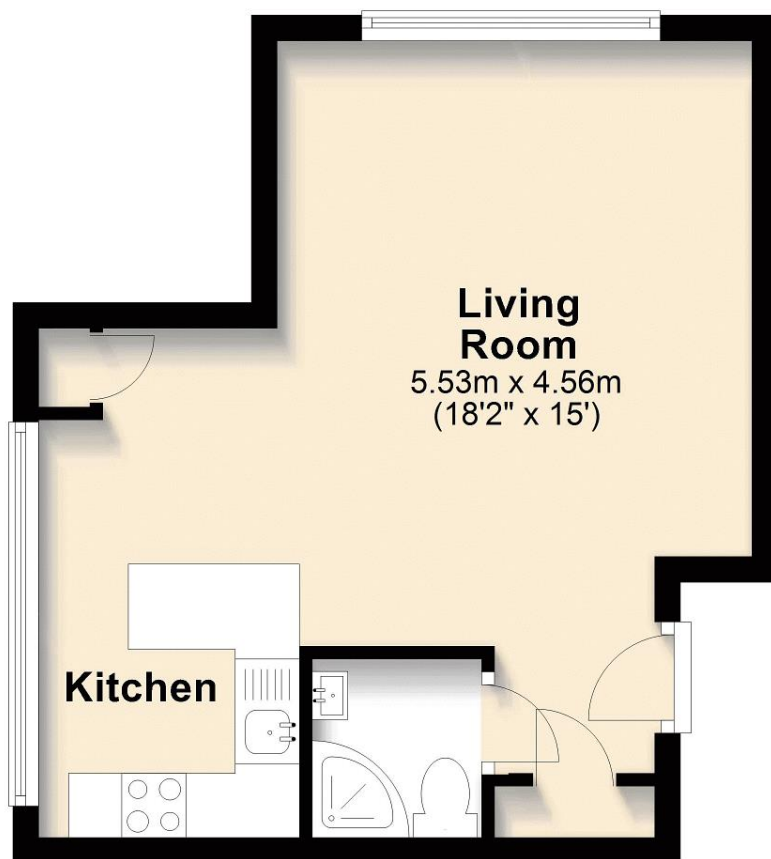
ALLOCATED PARKING SPACE

Situated to the side of the building.



First Floor Flat

Approx. 28.7 sq. metres (308.5 sq. feet)



Total area: approx. 28.7 sq. metres (308.5 sq. feet)

Note 1 - Please note domestic and electrical appliances have not been tested.

Note 2 - Mains electricity, water and drainage are all connected to the property.

Note 3 - Mole Valley Council, council tax band C.

Note 4 - Lease 125 years from 2010.(119 years unexpired)

Note 5 - Ground Rent £50 pa.

Note 6 - Maintenance approx £1,202 pa.

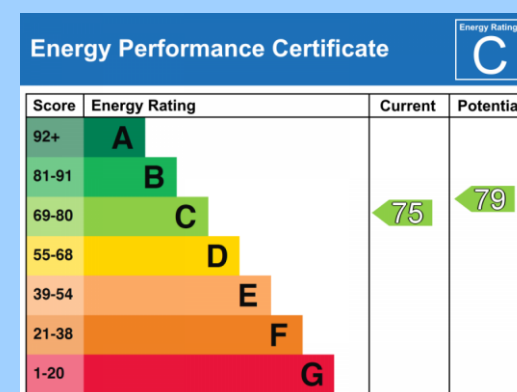
**VIEWING STRICTLY BY APPOINTMENT ONLY
THROUGH THE VENDORS AGENTS HUGGINS
EDWARDS & SHARP**

BOOKHAM SALES OFFICE

11 HIGH STREET, BOOKHAM, KT23 4AA

01372 457011

sales@hes-bookham.co.uk



HUGGINS EDWARDS & SHARP IS A TRADING NAME OF C & C ESTATES SOUTHERN LTD, A LIMITED COMPANY REGISTERED IN ENGLAND & WALES. COMPANY NUMBER 15446105. REGISTERED OFFICE: 4 BETCHWORTH PLACE, DORKING, RH4 1BF. C & C ESTATES SOUTHERN LTD FOR THEMSELVES AND FOR VENDORS OR LESSORS OF THIS PROPERTY WHOSE AGENTS THEY ARE GIVE NOTICE THAT THE PARTICULARS CONTAINED HERE ARE SET OUT AS GENERAL OUTLINE ONLY FOR THE GUIDANCE OF INTENDED PURCHASERS OR LESSEES, AND DO NOT FORM PART OF ANY OFFER OR CONTRACT. ALL DESCRIPTIONS, DIMENSIONS, REFERENCE TO CONDITION AND NECESSARY PERMISSIONS FOR USE AND OCCUPATION, AND OTHER DETAILS ARE GIVEN WITHOUT RESPONSIBILITY AND ANY INTENDING PURCHASERS OR LESSEES SHOULD NOT RELY ON THEM AS STATEMENTS OR REPRESENTATIONS OF FACT BUT MUST SATISFY THEMSELVES BY INSPECTION OR OTHERWISE AS TO THE CORRECTNESS OF EACH OF THEM.

www.hugginsedwards.co.uk

