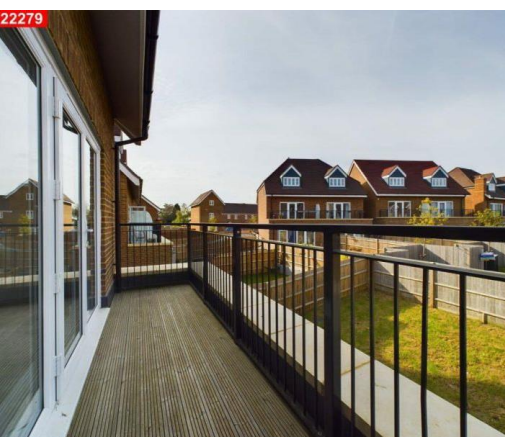


TO LET



HOLDING DEPOSIT (ONE WEEKS RENT) - £588.00

DEPOSIT (5 WEEKS RENT) - £2944.00

EPC - B • COUNCIL TAX BAND - E

Brand New Development • Private Garden

Off Street Parking

Tattenham Corner Railway Station - 1.2 Miles

Preston Park -0.5 Miles

Introducing a luxurious and spacious semi-detached residence located in a new development. This stunning property boasts four generously sized bedrooms, one with its own private bathroom, ensuring ultimate comfort and convenience for tenants. There is a medium sized private garden and off street parking.

Situated close to Preston Park just 0.5 miles away. Commuters will appreciate the proximity to Tattenham Corner railway station, only 1.2 miles from your doorstep.



**HUGGINS
EDWARDS
& SHARP**

**BEATRICE SQUARE, TADWORTH, KT20 5FR
£2,552 PCM**

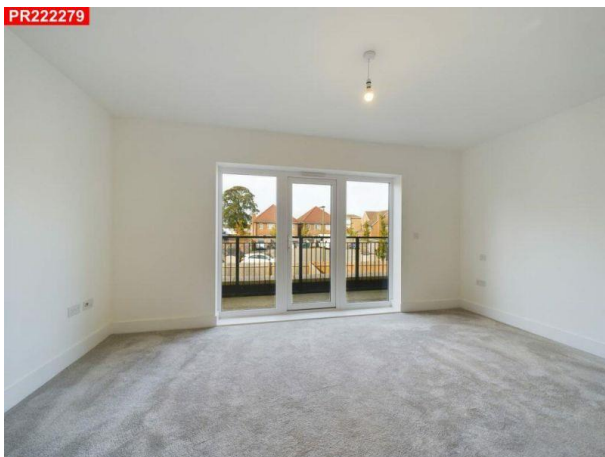
PR222279



PR222279



PR222279



Energy Performance Certificate

Energy Rating
B

Score	Energy Rating	Current	Potential
92+	A		94
81-91	B	85	
69-80	C		
55-68	D		
39-54	E		
21-38	F		
1-20	G		

GROUND FLOOR

LIVING ROOM
KITCHEN
CLOAKROOM

FIRST FLOOR

BEDROOM 1
ENSUITE
BEDROOM 2

SECOND FLOOR

BEDROOM 3
BEDROOM 4

GROUND FLOOR

SHOWER ROOM

Further information on Deposit and Administration Fees available at
www.hugginsedwards.co.uk/rental_information

**VIEWING STRICTLY BY APPOINTMENT ONLY
THROUGH THE AGENTS HUGGINS EDWARDS &
SHARP**

LEATHERHEAD LETTINGS OFFICE

3 BRIDGE STREET, LEATHERHEAD, KT22 8BL

01372 455244

info@hesresidential.co.uk



HUGGINS EDWARDS & SHARP RESIDENTIAL LETTINGS AND MANAGEMENT IS A TRADING NAME OF ENGLAND & WALES, REGISTERED NUMBER 07165611. REGISTERED OFFICE: 11 15 HIGH STREET, BOOKHAM AND FOR VENDORS OR LESSORS OF THIS PROPERTY WHOSE AGENTS THEY ARE GIVE NOTICE THAT AS GENERAL OUTLINE ONLY FOR THE GUIDANCE OF INTENDED PURCHASERS OR LESSEES, AND DO NOT WITHOUT RESPONSIBILITY AND ANY INTENDING PURCHASERS OR LESSEES SHOULD NOT RELY ON FACT BUT MUST SATISFY THEMSELVES BY INSPECTION OR OTHERWISE AS TO THE CORRECTNESS OF

www.hugginsedwards.co.uk

