







## NORWOOD ROAD

EFFINGHAM, KT24 5NT

---

**Beautifully Presented Throughout  
Extended and Totally Refurbished  
Howard of Effingham School Catchment**

**Three Bedrooms • Family Bathroom  
Entrance Hall • Cloakroom • Lounge  
"Wow Factor" Open Plan Kitchen/Dining Room  
Part Underfloor Heating to Ground Floor  
Sealed Unit Double Glazed Windows  
Large Secluded Rear Garden  
Own Private Driveway**

SITUATED on the south side of Bookham within walking distance of the highly regarded Howard of Effingham School and close to miles of open National Trust countryside a STUNNING CONTEMPORARY FAMILY HOME which has been extended and completely renovated throughout to a very high standard. The accommodation comprises 3 bedrooms, modern bathroom and lounge opening into a superb kitchen/dining room which has a considerable wow factor with feature Velux windows, quartz work surfaces, built in integrated appliances and bi fold doors opening onto a large garden and full width paved patio. The property benefits further from sealed unit double glazed windows, engineered oak flooring, natural timber internal doors with chrome door furniture, modern architrave and skirting with shadow lines and fitted carpets and light fittings. An internal inspection is highly recommended to appreciate this beautifully presented family home.





## GROUND FLOOR

### ENTRANCE HALL

Courtesy light, part glazed front door with full length sealed unit double glazed side panels either side, radiator, cupboard housing consumer unit, Hive heating control, under stairs storage cupboard, engineered oak floor, half glazed door to lounge and concealed door to kitchen/dining room, door to:

### CLOAKROOM

White suite comprising low level w.c. with concealed cistern, wash hand basin, mixer tap, engineered oak floor, extractor fan.

LOUNGE 14' × 11'10" (4.27m × 3.61m)

max, radiator, t.v. points, sealed unit double glazed windows, engineered oak floor, half glazed doors opening to:

LUXURY KITCHEN/DINING ROOM 21'6" × 17'7" (6.55m × 5.36m)

A large room with part vaulted ceiling and feature skylight windows plus wide bi fold doors opening onto the patio and garden. Fitted with an excellent & comprehensive range of modern wall and floor units featuring a handleless design and complimented with Quartz work surfaces and upstands, central island unit with Quartz work surface, deep pan drawers, breakfast bar, inset 5 ring ceramic hob, feature extractor/light, further floor units, underslung one and half bowl stainless steel sink unit with swan neck mixer tap, two built in eye level fan assisted ovens, integrated fridge/freezer, integrated dishwasher, integrated washer/dryer, concealed lighting, under floor heating, engineered oak floor, heating thermostat.

## FIRST FLOOR

### FIRST FLOOR LANDING

radiator, access to partly boarded loft with pull down timber ladder, Worcester Bosch gas boiler for central heating and domestic hot water, door to:

BEDROOM 1 11'8" × 11'5" (3.56m × 3.48m)

radiator, sealed unit double glazed window, rear aspect.

BEDROOM 2 11'6" × 11'5" (3.50m × 3.48m)

radiator, sealed unit double glazed window, front aspect.

BEDROOM 3 7'5" × 5'10" (2.26m × 1.78m)

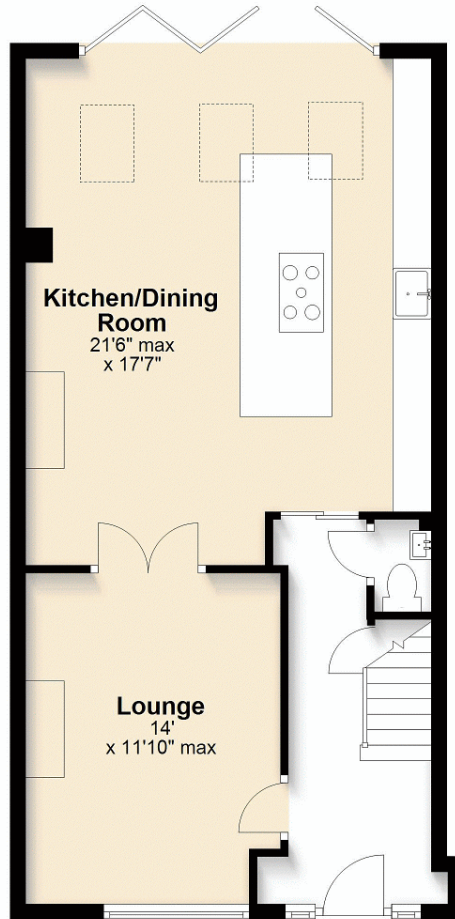
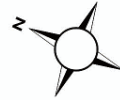
radiator, sealed unit double glazed window, rear aspect.

### FAMILY BATHROOM

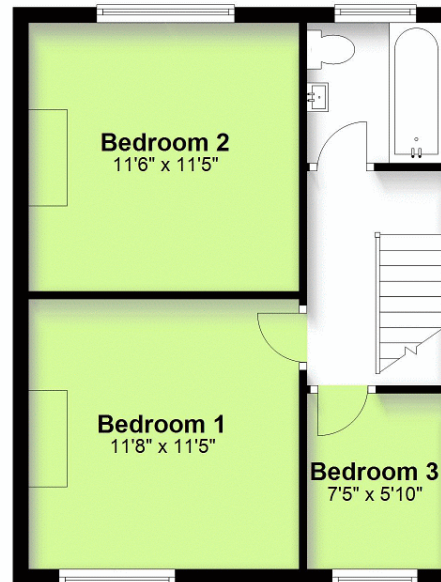
white suite comprising panelled bath with mixer tap and shower attachment, glazed shower screen, fully tiled surrounding walls, vanity unit with wash hand basin, mixer tap, cupboard under, low level w.c. with concealed cistern, fitted mirror with light, heated towel rail, tiled wood effect floor, obscure sealed unit double glazed window.



**Ground Floor**  
Approx. 619.8 sq. feet



**First Floor**  
Approx. 410.4 sq. feet



Total area: approx. 1030.2 sq. feet

Please note that this floorplan is not to scale and is for illustrative purposes only.  
Plan produced using PlanUp.

## OUTSIDE

DOUBLE WIDTH DRIVEWAY  
blocked paved.

### GARDEN

The rear garden enjoys a delightful south east facing aspect, mainly laid to lawn with full width paved patio, raised flower bed, timber garden shed, outside cold water tap and courtesy light. The garden is enclosed by close boarded panel fencing and is an excellent size extending to approx 90 ft in depth

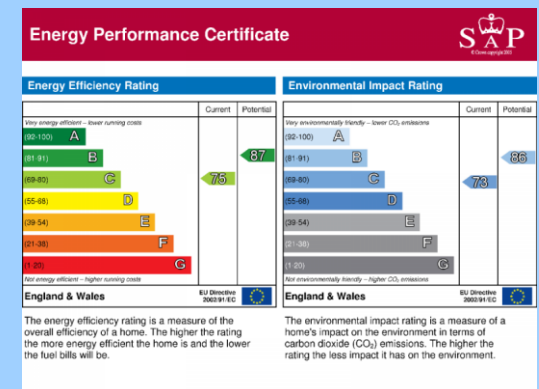
Note 1 - Please note domestic and electrical appliances have not been tested.

Note 2 - Mains electricity, water and drainage are all connected to the property.

Note 3 - Council Tax Band to be advised - Guildford Borough Council.

**VIEWING STRICTLY BY APPOINTMENT ONLY  
THROUGH THE VENDORS AGENTS HUGGINS  
EDWARDS & SHARP**

**BOOKHAM SALES OFFICE**  
11-15 HIGH STREET, BOOKHAM, KT23 4AA  
**01372 457011**  
sales@hes-bookham.co.uk



HUGGINS EDWARDS & SHARP IS A TRADING NAME OF HES RESIDENTIAL LTD, A COMPANY REGISTERED IN ENGLAND & WALES, REGISTERED NUMBER 07165611. REGISTERED OFFICE: 11 15 HIGH STREET, BOOKHAM, KT23 4AA. REGULATED BY RICS. HES RESIDENTIAL LTD FOR THEMSELVES AND FOR VENDORS OR LESSORS OF THIS PROPERTY WHOSE AGENTS THEY ARE GIVE NOTICE THAT THE PARTICULARS CONTAINED HERE ARE SET OUT AS GENERAL OUTLINE ONLY FOR THE GUIDANCE OF INTENDED PURCHASERS OR LESSEES, AND DO NOT FORM PART OF ANY OFFER OR CONTRACT. ALL DESCRIPTIONS, DIMENSIONS, REFERENCE TO CONDITION AND NECESSARY PERMISSIONS FOR USE AND OCCUPATION, AND OTHER DETAILS ARE GIVEN WITHOUT RESPONSIBILITY AND ANY INTENDING PURCHASERS OR LESSEES SHOULD NOT RELY ON THEM AS STATEMENTS OR REPRESENTATIONS OF FACT BUT MUST SATISFY THEMSELVES BY INSPECTION OR OTHERWISE AS TO THE CORRECTNESS OF EACH OF THEM.

[www.hugginsedwards.co.uk](http://www.hugginsedwards.co.uk)

